



 **GEMMA**

**Necta 1 & 2**  
Industrial vacuums

## TECHNICAL INFO

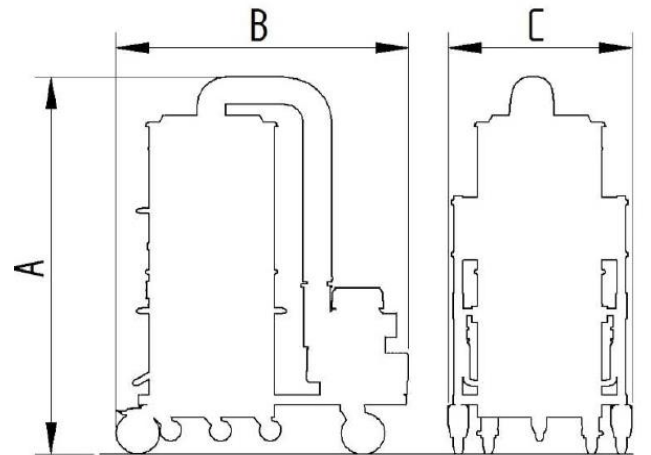
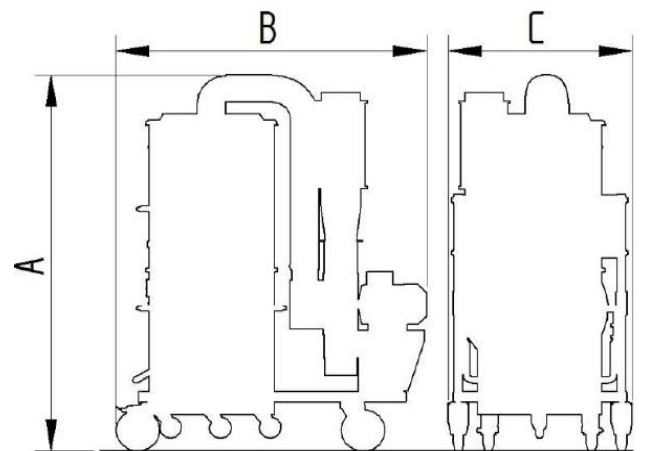
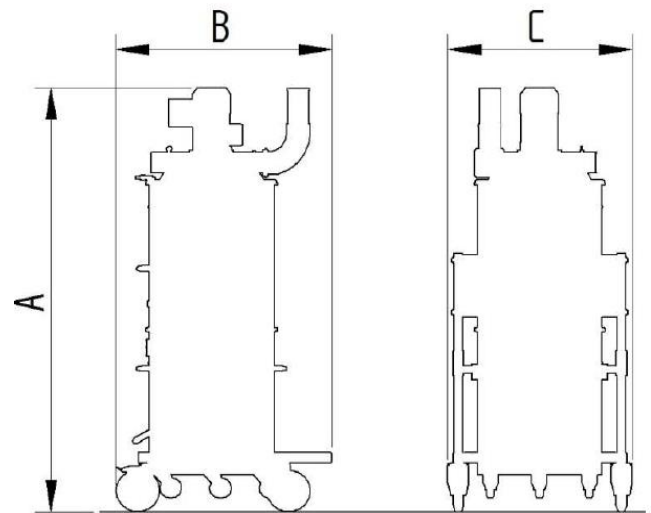
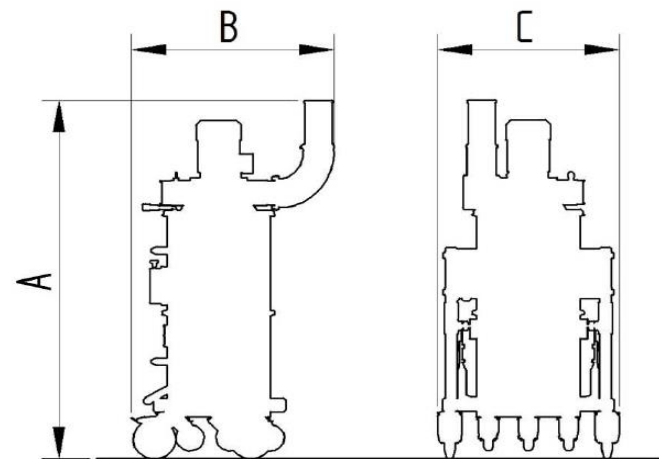
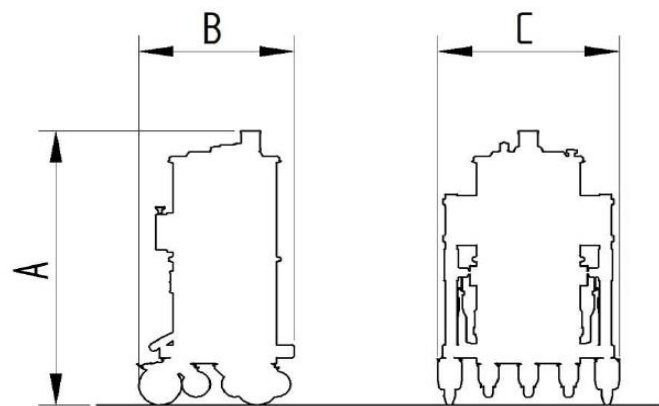
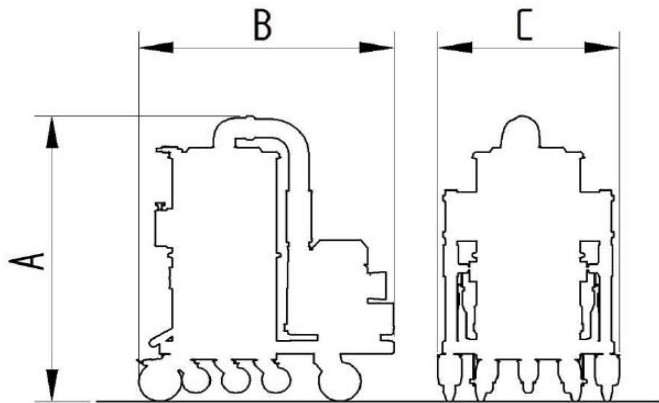
### Structure

- structure made out of steel
- visual filling indicator
- maintenance-free continuous working cycle
- non-marking swivel wheel with parking brake
- polyester filter class M
- quick release container opening
- silencer to reduce noise level
- integrated pneumatic motor filter stirrer
- quick release to open the container
- complies with CE safety regulations as standard

### Parameters

- high-capacity centrifugal electric fans
  - Necta 1 1.200 m<sup>3</sup> / h
  - Necta 2 4.400 m<sup>3</sup> / h
- container capacity
  - Necta 1 38 l
  - Necta 2 160 l





Parameter	U.M.	NECTA 1
Height A	mm	1370
Length B	mm	710
Width C	mm	640
Weight	Kg	75

Parameter	U.M.	NECTA 2
Height A	mm	2'030
Length B	mm	985
Width C	mm	845
Weight	Kg	125



Gemma Group srl  
Via Dante Alighieri, 6  
47853 Coriano – Rimini – Italy  
Tel. +39 0541 905811  
[www.gemma-group.com](http://www.gemma-group.com)  
email: [info@gemma-group.com](mailto:info@gemma-group.com)