

Master P

Double-head cutting-off machine

GEMMA

MASTER

Double-head cutting-off machine with front blades; fixed left unit and movable right unit with automatic movement

STANDARD CHARACTERISTICS

Structure

- electro-welded steel basement
- feeding roller conveyor combined with moving head
- central retractable pneumatic support
- 4 vertical pneumatic clamps

Cutting unit

- pneumatic tilting for 20° / 45° / 90° / 135° angles controlled by software
- micro-drop cutting lubrication with pure oil
- 2 wide blades Ø 600 mm

Axes (x-y-z)

- axis movements are controlled by brushless motors
- mobile head movement on cylindrical guides

Control panel

- electronic control unit on PC-Windows (17" color touch-screen) for interface and electronic axis management
- HICAM 2 software to upload and run machining programs; list machining and visualization of workpiece lead time
- ethernet, wifi and teleassistance
- RJ 45 – USB network ports
- meets Industry 4.0's requirements



Safety

- integral cutting area protections with automatic opening and closing
- complies with CE safety regulations as standard

Electrical cabinet

- IP 55 protection

Cutting capacity

90°
45°



200x200 mm
175x175 mm



270x150 / 320x100 mm
200x140 / 230x100 mm

General specifications



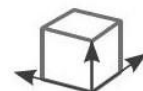
600 mm



3 kW (x2)



2.550 kg



6.400x1.700x2.150 mm

GEMMA

MASTER

Double-head cutting-off machine with front blades; fixed left unit and movable right unit with automatic movement

TECHNICAL INFO

Positioning axis		Cutting unit	
X axis		Blade diameter	600 mm
Stroke	5.000 mm	Shaft diameter	30 mm
Speed	25 m/min	Blade revolutions	2.800 rpm
Y e Z axes		Max. cutting speed	6 m/min
Tilting angles	20° - 135°	Blade output management	oleopneumatic
		Motor power	3 kW
		Cutting angles	20°-135°

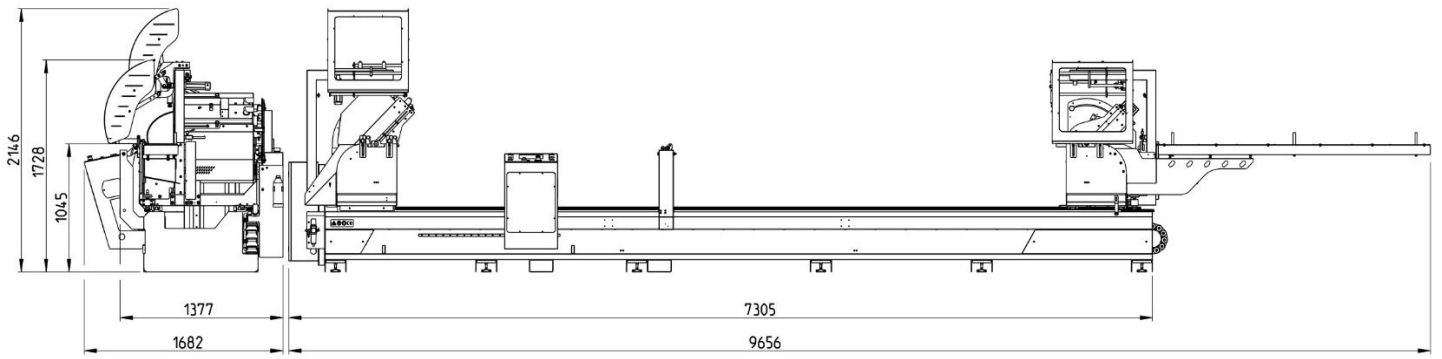
Power supply		Cutting specifications	
Electric power	400 V / 50 Hz	Minimum cutting length between 2 blades	370 mm
Air compressed supply	7 Bar	Maximum cutting length between 2 blades	5.000 mm
Air consumption per cycle	49 NI		

Optionals	
▪ Intermediate central support	▪ Label printer
▪ Blade Ø 600 mm (each)	▪ Protection with photocells
▪ Vertical clamps (2 pcs.) for external degrees	▪ USA-CANADA setup (UL-CSA standards)
▪ Motorized belt scraps conveyor	▪ Autotransformer for special voltage
▪ Automatic profile height detector	▪ Ocean freight packaging
▪ 2,5 m fixed head roller conveyor with vertical stops	

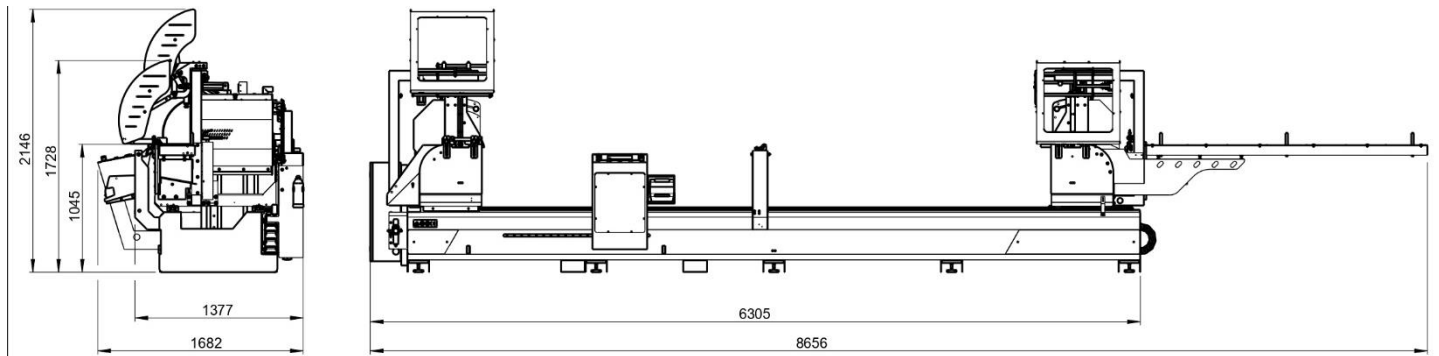


Machine layout

Master P 6 m

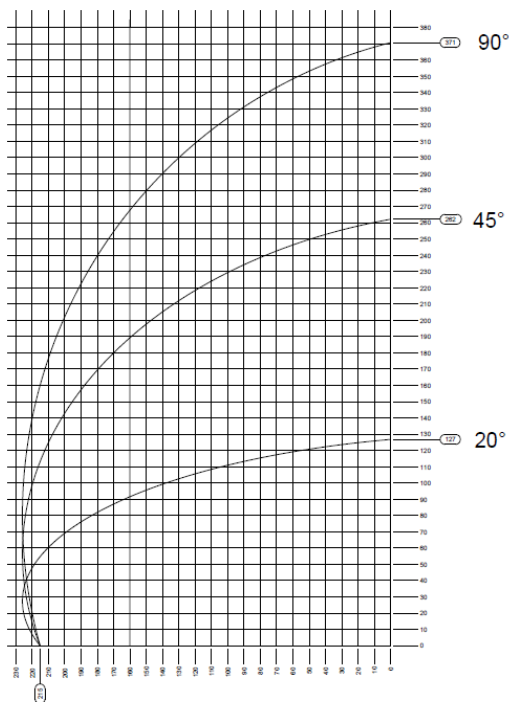


Master A 5 m



Cutting diagrams

CUTTING DIAGRAM MASTER 600





Gemma Group srl
Via Dante Alighieri, 6
47853 Coriano – Rimini – Italy
Tel. +39 0541 905811
www.gemma-group.com
email: info@gemma-group.com